

SAFETY DOESN'T HAPPEN BY ACCIDENT



WIDE RANGE OF PRODUCTS AND BRANDS
TO KEEP YOU **SAFE**

We're by your side

SAFETY DOESN'T HAPPEN BY ACCIDENT

Because lives and your business depend on it.

Ensuring your workplace – the environment and the equipment within it – is safe for you and your colleagues is a business imperative.

It isn't just about meeting legal requirements. Avoiding accidents, by increasing your focus on safety, and choosing the right solutions, not the cheapest ones, can have a tangible impact on your bottom line and a positive impact on both productivity and morale.



SITE SAFETY

CAUTION
WET FLOOR

Hazards in the workplace can cause huge issues and are not always obvious. It is everyone's responsibility to identify these hazards which include viruses and bacteria, spillages of chemicals and other substances, and trip hazards to name a few. It is critical that measures are put in place to prevent these hazards and protect both employees and visitors.

Leading Brands

3M

ADVANCE

COBA
europe

ecospill

JSP

ROCOL

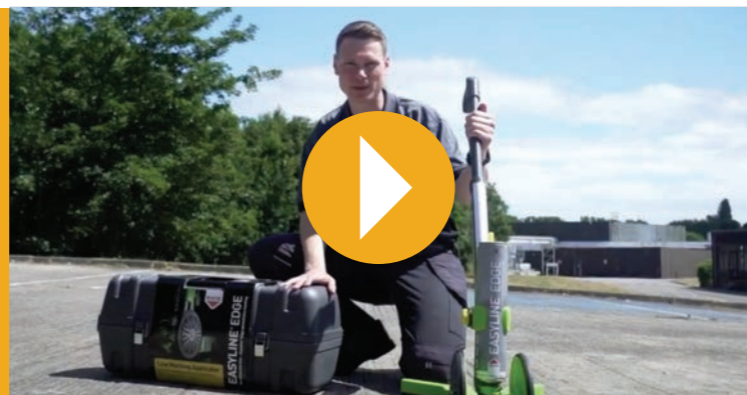
RS
PRO

Rubbermaid
Commercial Products

TENSATOR
Leading the customer journey

Watch this video

to see how Rocol have made line marking easy



Eye Wash Station

- Wall mountable eyewash station with plaster dispenser which has transparent door with rubber edges
- 4½ year shelf life
- Two bottles of buffered solution which open automatically once twisted from the bracket



787-3546

RS PRO High Visibility Rubber Speed Bump, 400mm x 250 mm x 70 mm

- Modular speed humps with end pieces available separately
- Each piece fitted with 4 cats' eyes and 27mm diameter groove
- Made from vulcanised virgin rubber which has better elasticity for better shock absorption



898-7188

Manual Call Points

- Surface mount call points in green plastic
- 85 x 85 x 51mm



741-8287 Break glass double pole

741-8281 Button release double pole

741-8290 Spare glass (pack of 5)

741-8284 Break glass single pole

COVID Site Safety Sign

- Provides clear and precise instructions regarding social distancing and hygiene measures
- Manufactured from strong non-adhesive rigid 1mm RPVC for enhanced durability
- Provides safety managers with relevant information displayed on one sign
- UV resistant, waterproof inks suitable for use indoor and outdoor



201-3312



Floor Marking Tape

- Convenient pack of colour coded vinyl tapes to provide floor marking and identification
- Tapes are brightly coloured that provide permanent high visibility
- Ideal for lane marking, hazard and safety marking of floors, loading docks, shipping areas and warehouses
- When compared to painting 3M™ vinyl tapes and safety stripe tapes are easy to apply and long lasting
- Pack includes: yellow, orange, blue, green, red, black, black/white and black yellow rolls 50mm x 33m



185-4021

COBAdot Vinyl Anti-Slip Flooring

- Manufactured from PVC to provide a hard wearing surface in industrial, commercial or leisure applications
- Can be laid loose or bonded to the floor
- Easy to clean
- Studded pattern offers extra grip
- 1.2 x 10m roll, 2mm thick



325-564

Indoor & Outdoor Circular Mirrors

- Fully weatherproof for indoor or outdoor use
- 90° vision
- Unbreakable, highly durable mirror
- Excellent visibility



773-9698 450mm diameter

773-9695 600mm diameter

Portable Mobile Barrier

- Flexible barrier which can be set straight, curved or in a circle
- 4 metres long with 16 articulating panels
- 2 x non marking wheels and four locking straps to secure the barrier in a closed position



794-8069

ABUS Indoor, Outdoor IR CCTV Surveillance Kit, 4 Camera Connections

- Records video streams from 4 analog HD cameras and 2 compatible IP cameras in parallel - with 25 frames per second and a resolution of up to 4MPx per analog HD and 6MPx per IP camera
- Supports the popular analog video formats TVI, AHD, CVI and CVBS, making it perfect for upgrading existing analog systems
- User-friendly app, web & PC software for live viewing and playback of video data



218-4751



Premier 50cm x 40cm Absorbent Sheets

- Offers up to 20% more absorbency than any other industrial alternatives
- Provides a high wear resistance with it's heavy duty cover stock
- Chemical, maintenance and oil spill versions available with a choice of pack size



192-7676 Chemical, 100 pads

192-7677 Chemical, 200 pads

192-7702 Maintenance, 100 pads

192-7703 Maintenance, 200 pads

192-7689 Oil, 100 pads

192-7690 Oil, 200 pads

Drain Covers

- Resistant to most chemicals as well as fuels, solvents and oils
- Easy to clean and can be re-used
- In high visibility orange, with a choice of sizes



192-7790 46 x 46cm

192-7791 61 x 61cm

192-7792 91 x 91cm

Premier Spill Kits

- Response kits great for indoor and outdoor use, in a durable vinyl holdall bag with easy carry strap
- 30 litre kits contain: 20 x Premier 50cm x 40cm pads, 2 x Premier 1.2m socks, 2 waste bags & ties
- 50 litre kits contain: 30 x Premier 50cm x 40cm pads, 3 x Premier 1.2m socks, 3 x 38cm x 23cm absorbent pillows, 5 waste bags & ties



192-7717 30 litre chemical

192-7730 30 litre maintenance

192-7723 30 litre oil

192-7718 50 litre chemical

192-7731 50 litre maintenance

192-7724 50 litre oil

Recycled PE Spill Trays

- For containment of leaks and spills
- In a range of sizes and with the option of grate / platform
- Made from recycled material



192-7757 20 litre 600mm x 400mm

192-7758 20 litre 600mm x 400mm with grate

192-7759 30 litre 800mm x 400mm

192-7761 30 litre 800mm x 400mm with grate

192-7762 40 litre 800mm x 600mm

192-7765 60 litre 1000mm x 605mm with platform

192-7767 100 litre 1195mm x 795mm with platform

FALL PROTECTION

Working at height involves a number of risks to those working above ground, and those working below. Fall arrest and other preventative measures such as tethered tooling help mitigate these risks. The wearing of fall arrest or fall protection equipment is, where needed, a requirement under the PPE regulations.

Leading Brands

3M

CERTEX
Lifting Products and Services

DBI SALA

JSP

MILLER
by Honeywell

PETZL

PROTECTA

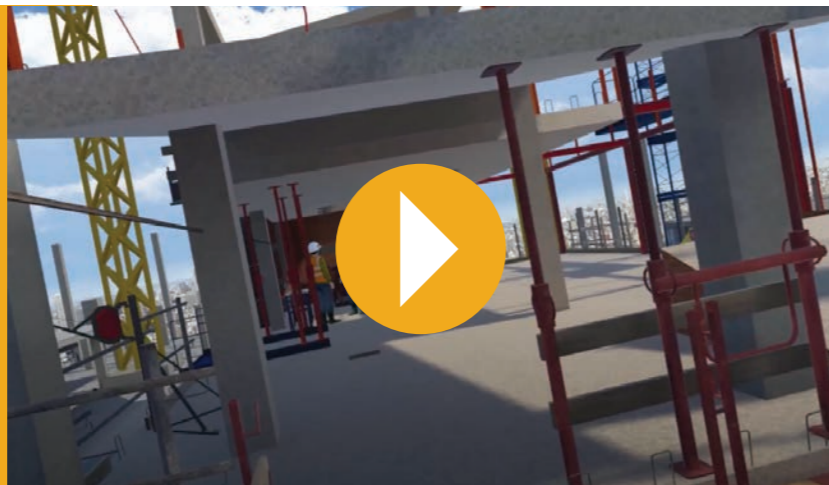
RS PRO

FOR A COMPLETE GUIDE TO FALL PROTECTION

Click here



Watch this video to take part in the 3M virtual reality working at height video



DELTA™ Comfort Harnesses

- Designed to be tough and comfortable for all-day use with extensive comfort padding - universal size
- Choice of pass-through buckles or TECH-LITE™ quick connect buckles for speed & ease
- Option with rigid work belt suitable for up to 27kg of tools



123-6153 1112946 - pass-thru buckles

123-6154 1112952 - quick-connect buckles

123-6155 1112961 - work position belt & quick-connect buckles

Petzl Front & Rear Attachment Safety Harness

- Specially designed to protect a person from injury and accidents especially when working at height
- Lightweight, easy to use and have adjustable straps which allow you to properly and safely fit the harness
- Absorbs the kinetic energy created when a fall occurs, through properly fitting the harness on a person and attaching the harness to a sturdy, strong place such as a solid railing



217-5621 Size 0 - waist 70-93cm, height 175-200cm

217-5614 Size 1 - waist 70-93cm, height 83-120cm

Spartan™ Restraint & Fall Arrest Kits

- Full body harnesses with either 1 or 2 point attachment for restraint or fall arrest use
- Adjustable leg straps, dorsal D-ring and parachute buckle
- Polyester webbing 44mm, breaking strength 23 kN - EN 361:2002



861-0403 1-point restraint kit

861-0406 2-point fall arrest kit

Miller H Design 2 point Harness

- 2 point harness with H architecture and accessible anchor points
- Adjustable buckles, leg and chest straps
- Bended position back D-ring



104-0878

Scaffold Hook Shock Absorbing Lanyard Karabiner Twin

- Shock absorption lanyard and screwgate type high strength Karabiner
- Lanyard width 25mm polyester webbing, 1.5m length
- Stitching is high strength polyamide, breaking load 1500 daN



123-6166 Lanyard

123-6163 Karabiner

ELECTRICAL SAFETY

Any engineer working on a piece of electrical equipment or supply circuits needs to ensure supplies are isolated and locked off in such a way to avoid risk of electrocution by accidental energisation. Equipment also needs to be tested to ensure no risk to users, including testing circuits and machinery earthing, insulation, and to ensure all portable appliances are damage-free.

Leading Brands



Watch this video

for more advice on how to implement safe isolation procedures and ensure compliance.



Fluke 1663 Electrical Tester

- The Fluke 1660 series multifunction installation tester with an insulation test voltage of 50V, 100V, 250V, 500V, 1000V
- Allows you to send test results directly to your smartphone that can be transmitted to other members of the team
- Data can be saved to Fluke Cloud™ storage, reducing the amount of paperwork and possible errors.



FLUKE

117-6666

Voltage Indicators

- 2 pole testers with LED or 2,000 count digital display (IVT-20)
- Functions include single pole test for phase detection, continuity test and ultrabright LED torch
- IVT-20 also adds 1kΩ resistance range and 1kHz frequency counter
- IP65, CAT.IV 600V/CAT. III 750V safety standard



124-1961 IVT-10 - LED indication

124-1962 IVT-20 - digital display

ICMA6N Clampmeter

- Fully automatic intelligent tester that selects the measuring function dependent on input terminal and current clamp conditions
- No range or function selection is necessary
- The clamp meter measures AC current to 600A, Vac/dc, resistance and continuity



123-3234

MIT400/2 Series Insulation Testers

- The MIT400 mk2 series insulation and continuity testers are designed for an exceptionally wide range of applications
- Insulation testing has been enhanced with feedback controlled test voltages to limit over-voltage to 2%, rather than the industry standard 10-20%
- A variable range has been added to allow any intermediate voltage from 10 V to 1000 V in 1V steps, where application specific test voltages are required (MIT420/2 and MIT430/2)



Megger.

921-4514 MIT410/2 adds 50V, 100V, PI, DAR, timed

921-4517 MIT400/2 250V, 500V, 1000V

921-4526 MIT420/2 adds variable test voltage

921-4539 MIT430/2 adds Bluetooth® download and software

FLIR C5 Compact Thermal Camera

- Pocket sized, and really handy for industrial and buildings related maintenance
- Capture and view clear images easily with its 160 x 120 detector, and 3.5" integrated touchscreen
- Images are always available on all your devices with built-in Wi-Fi and FLIR Ignite™ cloud connectivity



201-6980

FLIR E75 Advanced Thermal Imaging Camera

- Quickly identify hot spots and discover potential points of failure in electrical distribution and mechanical systems
- Offers a higher resolution (320 x 240), higher temperature range (to 650°C) and improved sensitivity than the C5 and E6-XT
- Complete coverage of near and far targets possible with interchangeable lenses (available separately). Supplied with 24° field of view, 17mm lens



135-3293

FLIR CM275 AC/DC Imaging Clamp Meter

- Combines thermal imaging with electrical measurement to make a powerful inspection, troubleshooting and diagnostic tool
- Provides a fast, reliable way to identify hot spots and overloaded circuits from a safe distance
- Confirm your findings with the clamp meter's wide range of functions plus temperature readings



168-1358

FLIR E6-XT Thermal Imaging Camera

- Perfect tool for diagnosing electrical, mechanical and building problems, thanks to its higher resolution 240 x 180 pixel infrared detector and expanded, -20°C to 550°C temperature range
- See more of the detail with FLIR MSX® image enhancement
- Share images and send reports easily from any location using built-in Wi-Fi and the FLIR Tools® Mobile app



184-6123

Triple Alarm CAT IV Non-Contact Voltage

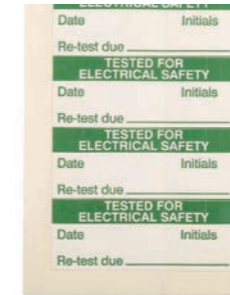
- The FLIR VP52-2 features light, vibration, and beeper feedback alarms and has a powerful LED flashlight
- Safely check whether an AC circuit is live before beginning work, detect voltage on exposed conducting parts or through insulation identify live wires within switchboxes
- For use within residential, commercial, and industrial buildings



201-6981

Tested For Electrical Safety Labels

- Write-on self-adhesive vinyl cloth labels, with pre-titled legends
- Each label 38 x 15 mm
- Supplied in one bag of 140



450-6164

PrimeTest 250+ Portable Appliance Tester

- Offers fast and efficient electrical safety testing with label printing and data storage, including free datalogger software
- Features all of the required tests of the IET 4th Edition Code of Practice along with USB download
- A comprehensive suite of fast and accurate electrical safety tests to enable almost any workplace appliance to be tested
- Fully compatible with the Test n Tag Pro serial printer for quick and easy label printing without any setup required



803-9781

Electricity Danger Label, Black/Yellow Self-Adhesive Vinyl

- Designed to prevent serious electrical injury from machinery and other electrical equipment by warning the user of the high voltage
- Pack of 250 warning symbol labels
- Should be stuck in a prominent place to ensure effectiveness



776-0967 50mm x 50mm (Pack of 250)

776-0948 25mm x 25mm (Pack of 250)

IRT1900 Digital RCD Tester

- Offering high accuracy and reliability, with rated tripping current 10 / 20 / 30 / 100 / 300 / 500mA
- 3 LEDs for checking correct wiring status
- Large digital display for easy viewing



123-2240

Fluke T6 Non Contact Voltage Measurement

- Measures up to 1000Vac through the open fork, without any test lead contact to live voltages
- Measures current to 200Aac also through the open jaw
- T6-1000 displays current and voltage simultaneously, and measures frequency



FLUKE

146-2607 T6-600
146-2605 T6-1000

VDE Interchangeable Blade Screwdriver Set

- Approved at 1,000V and individually tested
- Ergonomic Kraftform driver handle fits the hand's contours for improved grip and low fatigue working
- Includes Pozi, PlusMinus PZ/S, Phillips, Slotted, Hex, and Torx blades



Wera
SEIT 1906
775-5665

Lockout Starter Kit

- Offering machine, electrical and worker protection
- Designed for multipurpose protection, the kit features 24 different items for employee safety, all neatly stored in a tough carrying case
- The case has internal pockets for storage of the smaller products, plus a handle and shoulder carrier for easy carrying



RS PRO

862-5247

Fluke TiS60+ Thermal Imager

- Perfect for troubleshooting live equipment from a safe distance
- TiS60+ offers fixed focus with the ability to capture quality images from farther, with 320 x 240 resolution and 3.5" touchscreen display
- One-handed image capture, review and save capability, with Fluke Connect™ compatibility for sharing wirelessly

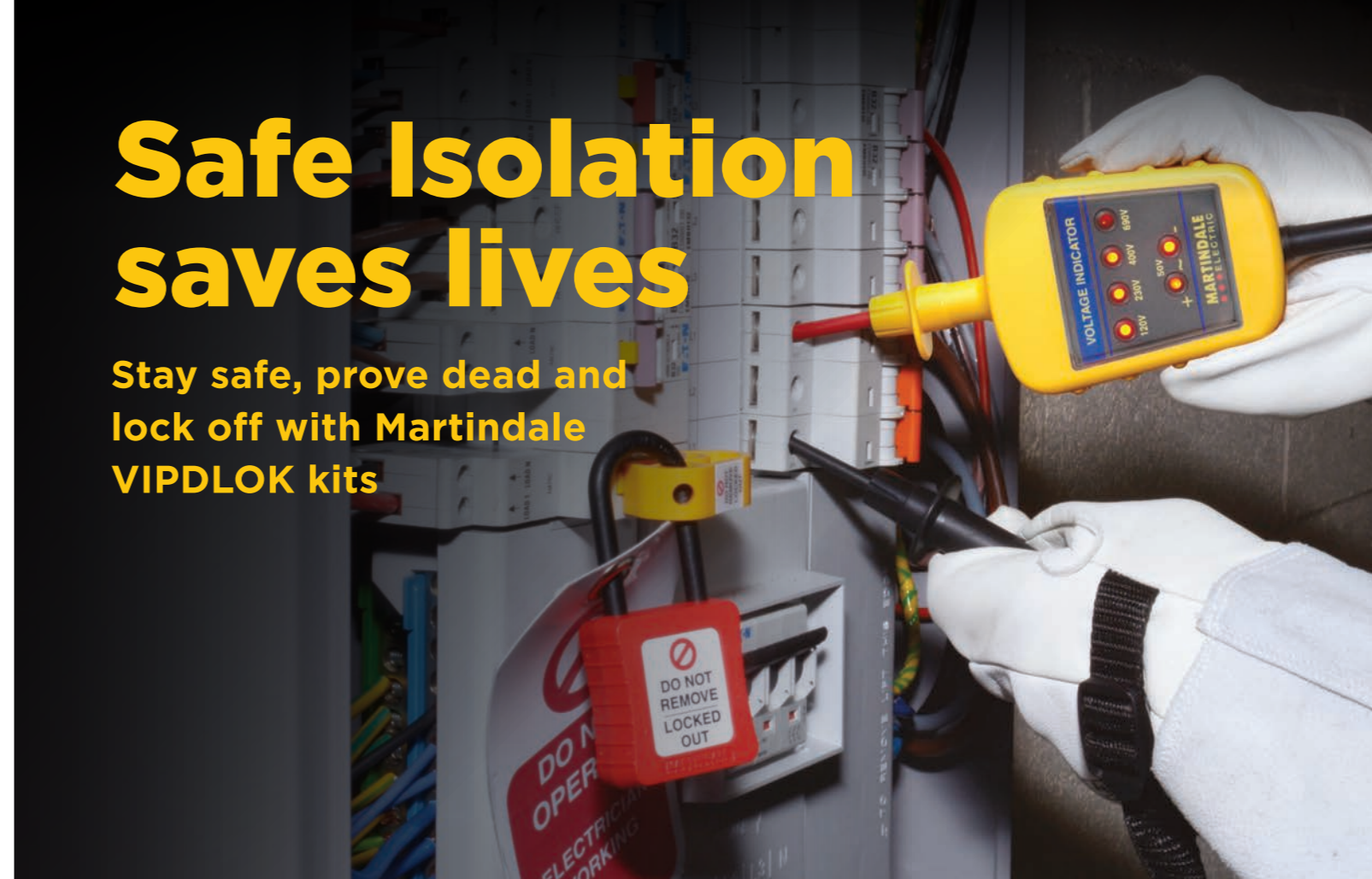


FLUKE

198-1145

Safe Isolation saves lives

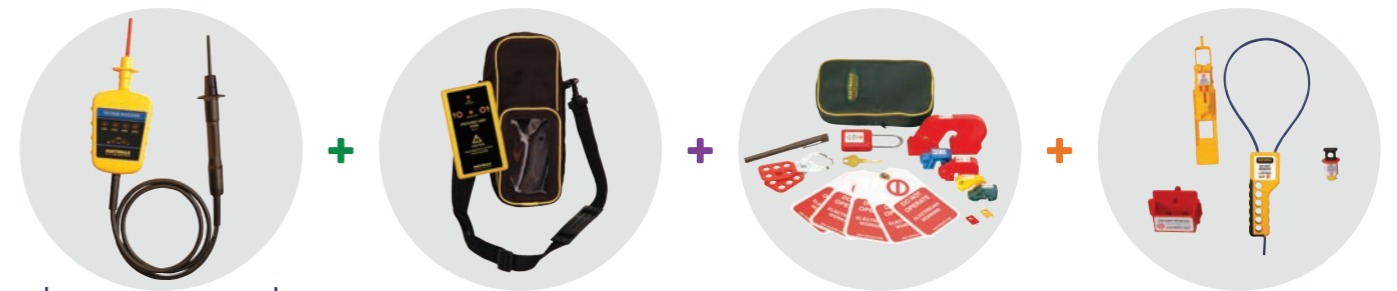
Stay safe, prove dead and lock off with Martindale VIPDLOK kits



VIPDLOK kits include everything you need to power down safely

- Essential for compliance with Electricity at Work Regulations for safe working
- Includes industry leading voltage indicator, proving unit, locking off devices and tags
- New VI-15000 Voltage Indicator, CAT IV 1000V for all installation categories
- Safe because it's simple, no batteries, no ranges, no switches

The simple solution to proving dead



VI13800 RS 782-4428
VI15000 RS 865-4734

VIPD138 RS 782-4437
VIPD150 RS 865-4756

VIPDLOK138 RS 782-4430
VIPDLOK150 RS 865-4759

VIPDLOKPRO138 RS 144-5454
VIPDLOKPRO150 RS 144-5455

Order today from RS at
ZA.RS-ONLINE.COM

MARTINDALE
ELECTRIC
Keeping You Safe

MACHINE SAFETY

Virtually all industrial machinery poses potential risks. The European Machinery Directive 2006/42/EC defines they be assessed and steps taken to mitigate them. This mitigation can include physical guarding, but also machinery safety products which act as electrically controlled safe guards reducing the risk of injury.

Leading Brands

ABB

Allen-Bradley
GuardMaster

OMRON

PHOENIX CONTACT

pilz

SCHMERSAL

Schneider Electric

SICK

SIEMENS

Watch this video

Understand why machine safety is vital and the steps you need to take to implement it.



Compact Emergency Stop Stations

- A compact 65x65mm square enclosed E-Stop station sealed to IP66/67
- Trigger action with choice of twist to rest or key reset options
- Dual M20 cable entries



- 185-479** Twist release E-Stop, 2 NC - CEPY1-1001
- 185-542** Pull release E-stop, 2 NC - CEPY1-1002
- 185-609** Twist release E-stop with shroud, 2 NC - CEPY1-2001
- 185-485** Pull release E-stop with shroud, 2 NC - CEPY1-2002

Series F2 Safety Foot Switches

- Professional range of Bernstein IP67 rated limit switches from the F2 series
- All models are made from aluminium diecast and are highly reliable and excellent quality



- 136-3189**
- 136-3190**

Stainless Steel Enclosed E-Stops

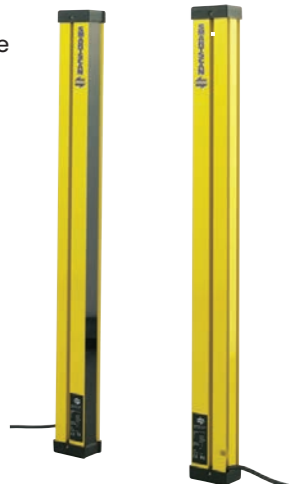
- Robust Stainless Steel 316L enclosed emergency stops perfect for washdown or harsh environments
- Compliant with EN ISO 13850, IEC 60947-5-1 and 60947-5-5 - twist to reset
- Padlockable versions can be locked in the 'off' or triggers position for maintenance tasks



- 826-4390** 40mm head, 2NC/NO, M20 gland entry
- 826-4394** 40mm head, 2NC/NO, 1/2" NPT gland entry
- 826-4404** 40mm head padlockable, 2NC/NO, M20 gland entry
- 826-4407** 40mm head padlockable, 2NC/NO, 1/2" NPT gland entry

Light Curtains

- Typical applications include: robots, packaging machines, textile machinery, component assembly lines, and process machinery
- Simple installation with diagnostic indicators, dual OSSD safety outputs



- 511-7052** 30mm resolution 12 beam
- 511-7068** 30mm resolution 24 beam
- 511-7074** 30mm resolution 48 beam
- 511-7080** 40mm resolution 24 beam
- 511-7096** 40mm resolution 36 beam
- 511-7103** 40mm resolution 48 beam
- 511-7119** 40mm resolution 60 beam



Preventa Safety Switches

- The Preventa XCSDMC series of magnetic coded non-contact safety switches are ideal for guards, inspection hatches, and other access points
- Staggered operation of contacts to detect misalignment
- IP66/67 protected
- Can achieve EN/ISO 13849-1 Cat. 4 or EN/IEC 61508 SIL 3 (with the appropriate monitoring system and connection)



- 422-5118** Compact, 1NO, XCSDMC5902
- 422-5124** Compact, 1NO w/LED, XCSDMC5912
- 422-5130** Compact, 2NC, XCSDMC7902
- 422-5146** Compact, 2NC w/LED, XCSDMC7912

PILZ PNOZ sigma Configurable Safety Relay

- Safety relay optimised for emergency stop pushbuttons, safety gates and light curtains
- Removable terminals with connection via spring terminals
- Display LEDs for relay status, with expansion options



- 156-083** PNOZ S3, 24Vdc, 2NO 1NC
- 156-099** PNOZ S2, 24Vdc, 3NO 1NC 1SC
- 156-106** PNOZ S4, 24Vdc, 3NO 1NC 1SC
- 155-939** PNOZ S1, 24Vdc, 2NO 1NC
- 156-112** PNOZ S4, 48-240V, 3NO 1NC 1SC

IQB2S Non-Contact Safety Switches

- Compact design for easy and ergonomic integration without a separate actuator enabling safe monitoring up to PL d
- Can be directly connected to a safe control solution via self-monitoring switching outputs (OSSDs)
- Available in common threaded barrel sizes and rectangular (12mm x 26mm x 40mm) formats with cable and connector options



- 201-1903** Rectangular, 4mm Sn, M8 male connector
- 201-1904** Rectangular, 4mm Sn, cable with M12 male connector
- 201-1905** Rectangular, 4mm Sn, 4-wire free cable
- 201-1898** M18 threaded, 8mm Sn, M12 male connector
- 201-1899** M30 threaded, 12mm Sn, M12 male connector
- 201-1890** M12 threaded, 4mm Sn, M12 male connector

Preventa XPS Safety Relays

- XPSUAB (single channel) & XPSUAF (Dual Channel) for monitoring Emergency stops, Guard / Magnetic / Proximity safety switches, PNP sensor, RFID safety switches, light curtains or Two-hand control stations
- XPSUAK (dual channel), for monitoring Emergency stop, Guard / Magnetic / Proximity safety switch, PNP & NPN sensors, RFID safety switch, Safety light curtain or Sensing mat/edges
- Full range of Preventa XPS safety relays available online

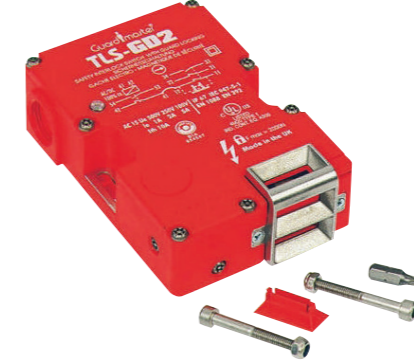


- 200-6176** Single channel, 1x output, 24Vac/dc - XPSUAB11CP
- 200-6177** Single channel, 1x output, 48-240Vac/dc - XPSUAB31CP
- 200-6133** Dual channel, 3x output, 24Vac/dc - XPSUAF13AP
- 200-6134** Dual channel, 3x output, 24Vac/dc - XPSUAK12AP



TLS-GD2 Safety Interlock Switch

- A positive mode, tongue operation, machine guard locking interlock switch
- It locks the guard closed until the machine power is isolated and ensures that the machine remains isolated whilst the guard is open
- Lid mounted status indication for visual reference
- Solenoids can accommodate either Vac or Vdc supply



- 792-3102** TLS-1 power to release, 24Vac/dc Std. Actuator
- 792-3105** TLS-1 power to release, 24Vac/dc, Flex Actuator
- 792-3109** TLS-2 power to lock, 24Vac/dc, Std. Actuator
- 792-3118** TLS-2 power to lock, 24Vac/dc, Flex Actuator

BNS 33 Magnetic Safety Sensors

- Durable, magnetic safety switches compliant with EN ISO 13849-1
- LED versions are illuminated when guard door is open
- Actuator must be purchased separately - e.g. RS 198-7863



- 625-0352** IP67 safety switch 1NO/2NC - BNS33-12Z-2187-2M
- 617-5150** P69K S/steel safety switch 1NO/2NC - BNS33S 12Z
- 623-3127** IP67 safety switch 2NC - BNS33-02Z-2187-2M (LED)
- 623-3149** IP67 safety switch 1NO/1NC - BNS33-11Z-2M

Safeball One/Two Hand Enabling Device

- Safeball is an innovative single hand enabling device which can also be used in pair to create a two hand control
- Mountable on flat surfaces or aluminium profiles and protected to IP67 (not submersible)
- Designed for high mechanical life of 10,000,000 cycles
- 24Vdc (5-30Vdc) operation with 2A (max) 20mA (recommended) switching current



- 733-2323** 1NC+1NO safeball with 2m cable
- 733-2332** 1NC+1NO safeball with 0.2m wires
- 733-2335** 1NC+1NO safeball with 10m cable
- 733-2348** JSTD25 two hand control switch with 2 x NC/NO contacts

PSRswitch Coded Non-Contact Switches

- PSRswitch is a fully electronic, compact, coded safety switch with integrated RFID transponder technology and intelligence for maximum protection against tampering
- Offers a cost-effective complete solution for flexible safety door and position monitoring compliant to EN ISO 14119
- Safe series connection with comprehensive diagnostic information with IO-Link support
- Three coding types available; Multicode, Unicode, and Fixcode for complete system flexibility



- 190-8415** Unicode sensor - PSR-CT-C-SEN-1-8
- 190-8417** Multicode sensor - PSR-CT-M-SEN-1-8
- 190-8418** Actuator - PSR-CT-C-ACT

Rotacam Hinge Switches

- Rotacam is heavy-duty, hinge-actuated safety-interlock switch installable with an existing hinge pin for direct actuation of the switch
- Machine power is isolated when the guard has been opened just 5° - internal cam can be adjusted from 5...11°
- Choice of two versions - electrical isolation via 2 x NC safety contacts, or pneumatic isolation
- Forced guided contacts - complies with EN 1088, IEC 947-5-1



- 325-703** 2NC+1NO - shaft 30mm L and 16mm OD
- 873-2190** 2NC+1NO - shaft 85mm L and 12.7mm OD
- 831-208** Pneumatic isolation 2-8Bar rated



F3SG Safety Light Curtains

- Matched sender/receiver light curtains ideal for simple detection applications using either 14mm (finger) or 30mm (hand) resolution
- 14mm offers up to 10m range, 30mm up to 20m - both with self-test function
- Options available up to 1.2m length (30mm resolution) from stock



125-0673	160mm height, 14mm resolution
125-0674	240mm height, 14mm resolution
125-0675	320mm height, 14mm resolution
125-0676	400mm height, 14mm resolution
125-0680	190mm height, 30mm resolution
125-0681	270mm height, 30mm resolution
125-0682	350mm height, 30mm resolution
125-0683	430mm height, 30mm resolution
125-0684	510mm height, 30mm resolution
125-0685	590mm height, 30mm resolution

D4SL Safety Guard Interlocks

- Compact guard interlocks which easily mount on 40 x 40mm aluminium profiles or guard frames
- Choice of actuators - purchased separately - with holding force of 1,300N
- Wiring options; internal terminal block (via M20 gland) or connector



862-1703	2NC + 1NC/1NO - terminal
862-1712	2NC/1NO + 1NC/1NO - connector
862-1715	1NC/1NO + 1NC/1NO - terminal
862-1683	3NC + 3NC - connector
862-1696	1NC/1NO + 1NC/1NO - terminal
820-3819	Flexible actuator
820-3800	Rigid actuator

G9SE Safety Relays

- Slim 22.5mm safety relays offering reduced mounting space and simple wiring via screw-less terminals
- 2 & 4 safety output options suitable for emergency stop switches, door switches and light curtains
- Can achieve EN ISO 13849-1: PLe/Safety Category 4 and IEC 62061: SIL3



890-3389	G9SE-201-DC24 - 2 safety outputs
890-3382	G9SE-401-DC24 - 4 safety outputs
890-3386	G9SE-221-T05-DC24 - 2 safety o/p, 5 secs off-delay
890-3395	G9SE-221-T30-DC24 - 2 safety o/p, 30 secs off-delay

D4NS Safety Interlock Switches

- A range of low cost, easy to install safety interlock switches with various contact configurations
- Gold-clad contacts as standard provide high contact reliability
- Actuators must be purchased separately



549-552	D4NS-4DF, 3NC, M20
549-558	D4NS-8CF, 2NC+1NO, 2xM20
549-619	D4NS-4CF, 2NC+1NO, M20
746-7292	D4NS-4AF, 1NO+1NC
746-7295	D4NS-4BF, 2NC
549-514	D4DS-K2, rigid actuator
549-631	D4DS-K3, flexible actuator

OS32C Safety Laser Scanners

- Compact and versatile laser scanner designed for easy configuration of complex zones and installation
- 270° detection angle provides total coverage of two sides with just one laser scanner
- Offers warning and switching zones with 8 LED indicators for at a glance operating state



757-7879	OS32C-SP1- 3m max sensing
862-5868	OS32C-SP1- 4m max sensing

Flashguard LED Beacons

- Weatherproof (IP65) LED beacons in 5 colours ideal for visual indication in many applications
- Fitted with a diffuser for greater visibility and flashing or static options
- Standard profile (listed) is 81mm high while Ultra Low profile is just 38mm high

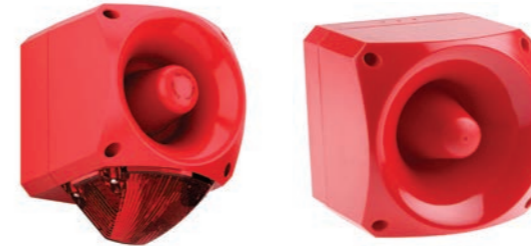


klaxon

309-6026	Static, 230Vac, red
309-6032	Static, 230Vac, amber
309-6048	Flashing/static, 11-35Vdc, red
183-3868	Static, 230Vac, clear
183-3869	Static, 230Vac, blue
309-6054	Flashing/static, 11-35Vdc, amber
183-3861	Flashing/static, 11-35Vdc, clear
183-3862	Flashing/static, 11-35Vdc, blue
183-3863	Flashing/static, 11-35Vdc, green

NEXUS Sounder Beacons

- 64 tone IP66 Sounders & Sounder Beacons in AC or DC variants; option of LED or Xenon
- visual element Options listed have 113dB sound output; with additional 116dB and 120dB options also available across the range DC voice sounders allow up to 7 voice messages (90db) to be triggered via volt-free inputs and uploaded via USB



539-4568	Xenon, red, 10-60Vdc
539-4625	Nexus 105, up to 113dB, 110/230Vac
146-7366	LED, red, 10-60Vdc
146-7367	LED, amber, 10-60Vdc
146-7376	LED, clear, 10-60Vdc
146-7377	LED, blue, 10-60Vdc
183-3847	LED, green, 10-60Vdc
539-4580	Xenon, amber, 10-60Vdc
907-6306	Nexus 110, up to 116dB, 24-48Vdc
539-4669	Nexus 120, up to 120dB, 110/230Vac
454-454	Voice sounder - 116dB, 24Vdc
454-450	Voice sounder - 116dB, 110/230Vac

Motor Driven Sirens

- Robust, high sound output sirens for areas with high background noise and harsh environmental conditions
- Available with up to 127dB sound output, IP65 weatherproof options and AC or DC input
- 12V input for security input available on the Master Blaster



klaxon

422-315	Mono 72 - 120db 230Vac
422-321	Duplo - 127db 230Vac/dc
907-6343	SuperM - 127db 230Vac
249-564	Mini mono - 103db 110/230Vac

SONOS Sounders & Beacons

- Compact 32 tone sounder and sounder & beacon combination with IP65 deep base option
- Offers low current consumptions, adjustable volume & tone selection and wide AC/DC voltage range
- Examples shown, with full range of SONOS available from stock - click to view



489-4966	Deep base, red LED & sounder, 17-60Vdc
489-4950	Shallow base, red LED & sounder, 17-60Vdc
489-5127	Shallow base sounder only, white, 110/230Vac
489-5054	Deep base, amber LED & sounder, 17-60Vdc
489-5032	Shallow base, amber LED & sounder, 17-60Vdc
489-4938	Shallow base sounder only, red, 9-60Vdc
489-5010	Shallow base sounder only, white, 9-60Vdc



SAFETY IN NUMBERS. OUR RANGE OF PPE.

The huge range
of RS PRO PPE
products means
you'll always find
what you need to
stay safe.



RS Components SA

20 Indianapolis Street, Kyalami Business
Park, Midrand, South Africa

Phone us: +27 11 691 9300

Email: sales.za@rs-components.com

